



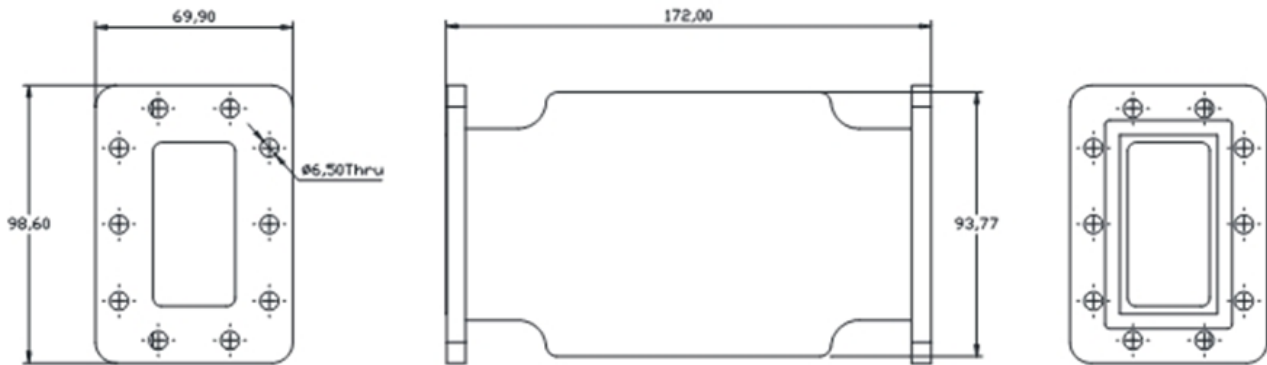
Model Number:
F-WGC1-714086

RF Components

C-Band Waveguide Filter

4000-4200MHz

Physical Dimensions ($\pm 0.3\text{mm}$)



Filter

RF Parameters	
F-WGC1-714086	CGCF
Band Pass Frequencies	4000-4200MHz
Rejection	$\geq 70\text{dB}@3800-3850\text{MHz}$ $\geq 60\text{dB}@3850-3980\text{MHz}$ $\geq 30\text{dB}@3980-3985\text{MHz}$ $\geq 25\text{dB} > 4230\text{MHz}$
Insertion Loss (dB) Max	$\leq 1.4@400-4020\text{MHz}$ $\leq 0.75@4020-4200\text{MHz}$
Return Loss Min	18dB
Connectors	CPR229F/ CPR229G
Group delay variation ± 0.5 MHz from any frequency within PassBand	2nSec Max@4000-4010M

Environmental	
Operating Temperature	-20 °C to +50°C
Location	For Indoor or Outdoor use
IP Rating	IP66
Power Handling	50W

Broadcast



Marine Oil & Gas



SNG & VSAT



Satellite Teleport

